



# SUPERIOR FLOAT TANKS

## Ventilation Details



For ventilation installation you will need to cut holes through the float rooms wall with a 3 1/8" hole saw. You will want to start the cutting by running the drill in reverse and then after the initial cut through the white gelcoat you can run the drill in the forward direction.

Once the holes are cut out you can slip the vent grill into the hole and then attach using oval style stainless steel screws. Pilot holes for the screws should be drilled first so that the screws install easily.



Fresh air intake vents should be located on the plumbing end of the float room where there is access to add a fan system. The exhaust vents that remove the heat and humidity can be installed in the roof or a wall panel. The shower vent can then be used to remove the excess humidity from the space.



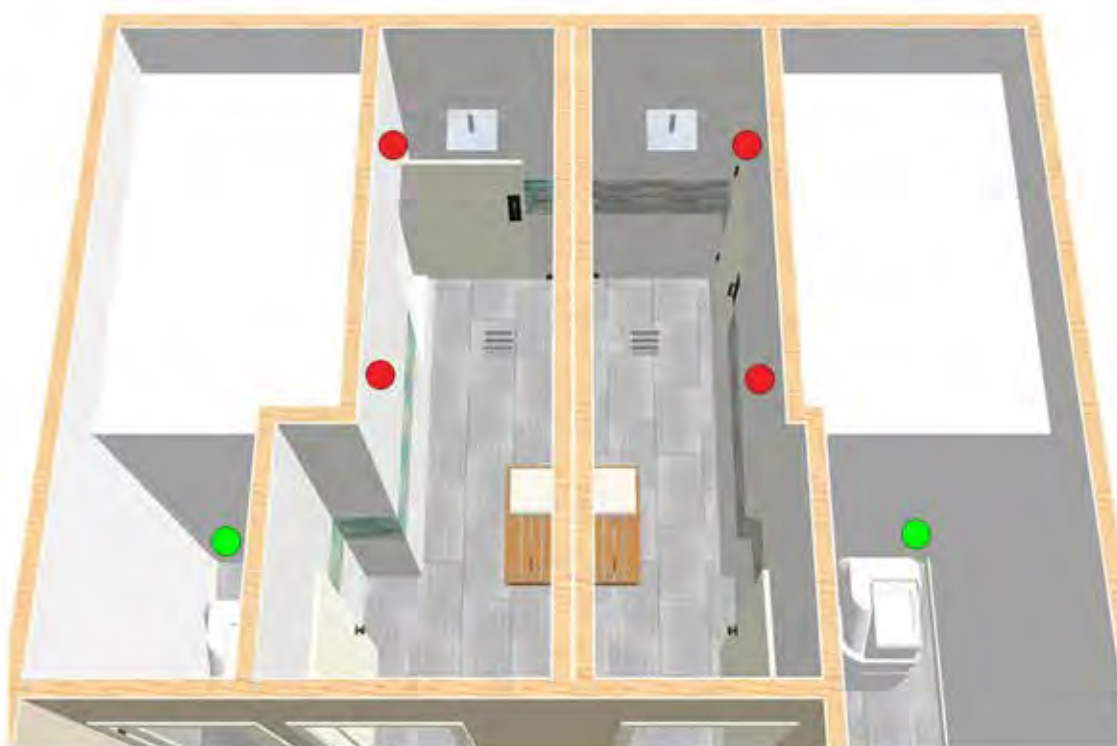
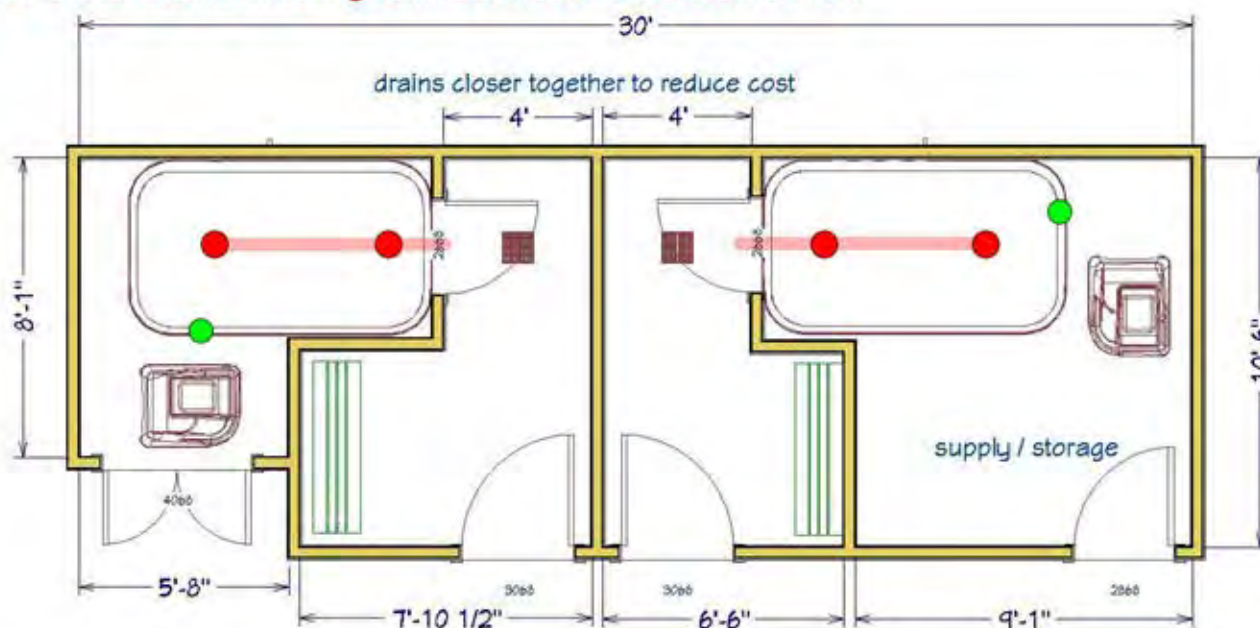
# Ventilation Installation Locations

Listed below are examples of the ventilation connection points.

In this example the vents go through the top of the float room roof and are tied together and vented through the wall above the float room door.

● Fresh air intake locations 4-6" from the bottom of the wall panel

● Exhaust vents on ceiling vent above door to the shower area.



In this example the fresh air comes in through the filter closet and exhausted through the face wall of the float room.

# Basic Ventilation Blower Setup



Parts needed :  
AC fan  
black Valterra fitting  
4" flex duct  
white fan holder box  
2 duct clamps  
screws

center fan in holder box  
and clamp box together



Valterra fitting screws against  
float room behind vent fitting



Conect the fan box to the black  
fitting with duct tube and use  
duct clamps to secure.  
The fan has 3 speed settings  
which can adjusted for comfort.

Basic blower installed on float room.

